



METAL CUTTING pavilion



Metal Cutting is the very foundation of the machine tool industry, a group that represented more than \$500 billion in worldwide consumption in 2008. This pavilion is where you will find the latest innovations in metal cutting equipment, machining centers, turning centers, drilling, boring, milling, and more.

» **South Building**
10am to 6pm

VMC WITH SMALL FOOTPRINT

Eliminating all hydraulics, this compact NBV VMC is flush with modular application flexibility, including configurations for 3-, 4-, and 5-axis contouring or 5-axis mill/turn work; integrated CAM support and program simulation; and four spindle options ranging up to 42,000rpm. In a footprint of just 9.6m² (133.5ft²), the fixed-table NBV 400 provides X, Y, and Z ranges of 700mm x 600mm x 500mm.



Also on display will be the HyperMach GTi profiler, the VDF 800 DUS Big Bore CNC lathe, the modular HMC 1250/1600 series, and the SPECT 500/630 HMC.

IMTS Booth S-8519

MAG Americas

Erlanger, KY
mag-ias.com

FIVE-AXIS LINEAR MOTOR TECHNOLOGY

Designed for ultimate precision and supreme surface quality, the HSM 400U LP provides 5-axis simultaneous high-speed machining, delivering powerful performance and precision on all five axes. The HSM 400U LP achieves speeds up to 250rpm on the rotational axis and up to 150rpm on the swivel axis, with a B-axis swivel range of 220°. With powerful vector spindles available at 30,000rpm, 42,000rpm, or 54,000rpm, the HSM 400U LP also provides excellent surface finish and part detail, while significantly reducing machining time for semi-finishing and finishing operations. The machine's high dynamics and 1.7g acceleration help facilitate the reduction of non-productive time and help to maximize spindle utilization.

Also on display will be the HPM 1200 HD 3-axis machining center, the CUT 20P wire EDM, the FO250 SP diesinking EDM, and the CUT 1000 OilTech wire EDM.

IMTS Booth S-8754

GF AgieCharmilles

Lincolnshire, IL
gfac.com/us





COMPACT, HIGH-PRECISION LATHE

QuickTECH TT-42/60 CNC is a dual turning and milling complex lathe, available in both 42mm and 60mm bar capacities, offers a reduction in the machine footprint while significantly increasing the machining capabilities and cutting capacity. Maximum travel and feed is 140mm x 410mm x 230mm in the main axis and 410mm x 410mm x 360mm in the sub-axis. The QuickTECH TT-42/60 provides complete part machining, including all complex milling functions, and features eight axis and four spindles – two turning spindles, two milling spindles. Standard on the main spindle is a 10hp high torque spindle motor while the sub-spindle is equipped with a 5hp high-torque spindle motor for backworking. Each spindle features a full, continuous C-axis with braking system, and both come standard with DIN-173-42B collet chucks.



Also on display will be the QuickTECH IT-42 ROBO 4-axis robot turning center with milling function.

IMTS Booth S-8536

Absolute Machine Tools Inc.

Lorain, OH

absolutemachine.com

COST-EFFECTIVE 5-AXIS AUTOMATION

Fanuc RoboDrill machining centers will be featured during IMTS, including fully-integrated production cells such as the RoboDrill Med Cell, an affordable, 5-axis machining/automation center. In addition, there will be a RoboDrill long-bed with a pallet changer and twin direct-drive, fourth-axis rotary tables, shuttling in and out of the work zone along with a RoboDrill short-bed JobShopCell. Methods will also display the RoboDrill TrodeMaster, for machining graphite electrodes.



Also in the Methods booth at IMTS will be Methods-Feeler vertical machining centers; CNC lathes/turning centers; double column bridge-style machining centers; and boring mill models. Beyond the Methods-Feeler line will be Matsuura CNC machining centers; Nakamura-Tom multitasking turning centers; KIWA-Japan horizontal and vertical CNC machining centers; Fanuc wire EDMs; Exeron die sinker EDMs; and the VisionGauge digital optical comparator.

IMTS Booth S-9119 and S-9126

Methods Machine Tools Inc.

Sudbury, MA

methodsmachine.com



ENHANCED CNC CONTROLS

On display at IMTS 2010 will be model 30i-B Series CNC control; 0i-D/0i-D Mate control with enhanced functionality; the 35i-B CNC control for transfer line machines; 5-axis volumetric error compensation; and other industry solutions. The FANUC CNC 30i-B series control is an upgrade from the 30i-A Series, offering advancements in operability and maintainability including: USB memory port and enhancements in dual safety check. For advanced machining with high accuracy, the 30i-B delivers advancements in high speed, 5-axis capabilities with proven architecture and software algorithms to drastically reduce cycle times while improving part accuracy and quality. The 30i-B also features High Speed Smooth TCP; high speed multi-path PMC; enhanced tilted working plane and high speed smoothing functions; and enhanced DSPs. In addition, the 30i-B has enhanced FSSB and network performance, enhanced diagnostic functions for MTTR reduction, and enhanced DSP for advanced servo control.

IMTS Booth S-8919

FANUC CNC America

Hoffman Estates, IL

fanuccncamerica.com



ULTRA-HIGH PRECISION WIRE EDMS

Makino's UPV-3 and UPV-5 machines feature a fixed table design in which axis movements are controlled by machining heads. Included in the UPV design are ceramic insulators placed between the work table and machine casting to reduce stray electric capacitance and enable the SPG II machining circuit to stabilize micro-electrical discharges. Utilizing these capabilities under standard machining conditions for a 20mm thick workpiece measuring up to 100mm x 100mm users can achieve 0.2µm Rz surface finishes. The table's electrically-conductive machining area can also be limited for jobs requiring a surface finish better than 0.2µm Rz. This further reduces stray electric capacitance for surface finishes down to 0.08µm Rz (actual measured value).

IMTS Booth S-8700

Makino Inc.

Mason, OH
makino.com



TURNING CENTER DELIVERS SPEED, POWER, PRECISION

The Lynx 300, a new turning center from Doosan, with its 20hp, high torque motor provides the power to produce near-mirror finishes. Its 10" diameter three-jaw power chuck turns 3" bar stock at speeds up to 3,500rpm while its bed is a one-piece Meehanite casting to absorb vibration and help dissipate heat. A 30° slant bed maintains a minimal and constant distance between tool tip and guideway – maximizing rigidity while eliminating distortion. The headstock is mounted on the same plane as the tailstock to assure perfect alignment and center height regardless of the bed temperature. Widely-spaced linear motion guideways allow high-speed rapid traverses – 945ipm on the X-axis and 1,181ipm on the Z.

Also on display will be 13 turning centers – which include five new machines; three horizontal machining centers; and five vertical machining centers.

IMTS Booth S-8100

Doosan Infracore

West Caldwell, NJ
infracoremt.com

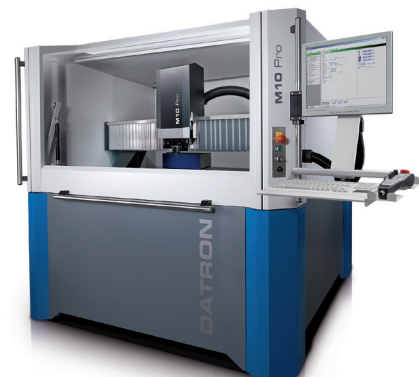
HIGH-SPEED MACHINING CENTER WITH LINEAR SCALES

The M10 Pro high speed machining center features linear scales on all axes driven by larger motors and drives yielding a ±5µ positioning accuracies and rapids up to 30mpm. The addition of linear scales led to the development of a newly designed high-speed CNC control for 3- to 6-axes. The M10 Pro has a direct-drive, liquid-chilled, 40,000rpm spindle using HSK-25E toolholders with <1µ runout. With a gantry construction the M10 Pro has a maximized work area of 40" x 28" while only using a floor space footprint of 79" x 83".

IMTS Booth S-8484

Datron Dynamics Inc.

Milford, NH
datron.com





CUSTOM PC INTEGRATES WITH MACHINE CONTROLS

Building any size PC with customized hardware and software solutions, sefaré controls can bridge next generation technology with virtually any CNC machine tool of yesterday, today, and tomorrow. Running Microsoft Windows 7 Pro or XP Pro, the all-in-one base PC includes a 15" LCD touch screen, Intel Core2 Duo processor with 4GB of RAM, pre-installed 3.0 GB DDR, and integrated wireless.

Available production enhancing software includes adaptive controls, conversational programming, and 3D simulation with crash detection. Standard input/output devices are RS232, USB 2.0, and Ethernet. Software data collection packages can provide gaging information, SPC, and auto-tool off-set function automated part inspection and statistics with automated tool offsets.

IMTS Booth S-8100 & S-9482

sefaré controls

Charlotte, NC

sefare.com

HORIZONTAL LATHE

The LB-EX series of horizontal lathes sets offer strength, accuracy, and flexibility in the 2-axis lathe category. The IMTS featured machine will showcase the MYW capabilities and an optional hobbing function. The LB3000-EX features the operator-friendly THINC-OSP control – a true PC, Windows-based platform with open architecture, plug and work USB capability, and 40GB of memory. This control makes it easy to connect to peripheral equipment and utilize other machine tool accessories, improving productivity and data gathering. Also on display will be the GENOS M460-VE vertical machining center.



In addition to Okuma machines, members of Partners in THINC will be on hand demonstrating peripheral equipment, software, and accessories.

IMTS Booth S-8500

Okuma America Corp.

Charlotte, NC

okuma.com

VT 250 VERTICAL TURNING

With its vertical, high-torque, high-power 25kW (33.5hp) 4,000rpm main spindle, the VT 250 makes turning, drilling, and threading operations easy, keeping cycle times brief even in tough material. The VT250 main spindle torque is a strong 250Nm. Axis travel is direct-driven 20.9" x 12.2" in X and Z and ± 3.5 " in Y. Maximum work piece turning diameter is 7.87" and maximum length is 5.91". A rigid machine structure results in substantial cutting performance in serial production and is ideally suited for fine- and hard-machining. Especially large roller guides in each axis guarantee excellent stability despite high loads.

The small-footprint VT 250, equipped with an integrated pick-up system, self-loads workpieces, saving the user the costs and programming time related to external automation.

IMTS Booth S-8748

EMCO Maier Corp.

Columbus, OH

emco-world.com





TURNING, MILLING COMBINED OPERATIONS

The family of multitasking technology products has expanded with the addition of the Integrex *j*-series. The *j*-series performs 4-axis simultaneous machining with 5-axis tool tip positioning, providing significant advantages in productivity, accuracy, and flexibility. Unlike multi-tasking machines with a drum turret type, Mazak's Integrex *j*-200 accommodates 20 tools in a tool magazine, and increases versatility in part production. The machine's main turning spindle, with C-axis control, features an 8" chuck mounted on a 15hp, 5,000rpm integral spindle motor, generating 119ft/lb of torque.

The Integrex *j*-200 also includes a 7.5hp, 12,000rpm milling spindle that can be indexed in 5° increments from -30° to 190°. The Integrex *j*-200 offers a maximum machining diameter and length of 19.7" with minimum tool interference for large workpieces.

Also on display will be Hyper Variaxis, Variaxis, Vertical Center Smart, and FJV machining centers; Megaturn Nexus, Slant Turn Nexus, and Valve Turn-20 turning centers; and the SuperTurbo-X 510 Mark III hybrid laser production system.



IMTS Booth S-8300

Mazak Corp.

Florence, KY

mazakusa.com

Leader in Solid Carbide End Mills

Not quite what you expected? We apply game-changing innovations in geometry to our drills, too.

...and **DRILLS**



You may know us as the high performance leader in solid carbide end mills, but we also have a full line of high performance drills with innovative geometric design features. **Hi-PerCarb Double Margin Drills** are available in 3xD and 5xD and **ICE-Carb Internal Coolant Drills** are available in 5xD and 8xD.

Experience the kind of productivity gains that only SGS can deliver in your next holemaking operation.



55 South Main Street • Munroe Falls, Ohio 44262 U.S.A. • Phone: (330) 686-5700 • www.sgstool.com • Fax: (330) 686-4111
Manufactured in the USA. Contact your local SGS distributor for details.

Solid Carbide Tools
An ISO 9001 Certified Company
Performance. Precision. Passion.



COMPACT, HIGH-SPEED DRILLING/TAPPING

The DT-1 high-speed drill and tap machine with full milling capabilities. The machine features a 20" x 16" x 15.5" work cube and 26" x 15" T-slot table, while maintaining a very small footprint. A powerful BT30 taper spindle spins to 15,000rpm, and allows tapping at speeds to 5,000rpm. The spindle is coupled directly to the motor for smooth, quiet operation and extreme thermal stability. A 15hp vector drive system provides 46ft/lb (peak) of cutting torque for milling and boring operations. The DT-1 is equipped with a high-speed, 20-pocket, servo-driven tool changer that swaps tools in 0.8 seconds.

Also shown during IMTS will be the full range of Haas equipment, including the 50-taper EC-1600 HMC.

IMTS Booth S-8119

Haas Automation Inc.

Oxnard, CA

haascnc.com



FIVE-AXIS HIGH-PRECISION MACHINING

The Hermle C 42 U machining center has X, Y, and Z axes of 800mm, 800mm, 550mm, respectively, with rapid traverse of 60mpm in all axes. The spindle features Hermle's slim-end design for deep cavity machining and is available in speeds of 10,000rpm, 18,000rpm, and 25,000rpm. Tooling is SK 40 and HSK A 63 (the 25,000rpm spindle utilizes only HSK A 63). The C 42 U is available with a variety of table configurations – for 3- and 4-axis machining, a rigid clamping table with a 1,050mm x 805mm surface and a load capacity of 2,000kg is available. Five-axis versions incorporate swiveling rotary tables in three sizes: 800mm x 630mm with a maximum load of 1,400kg; 440mm with a capacity of 450kg; and 420mm with a 600kg load capacity. Also demonstrated will be the C 50 U and the MT series.

IMTS Booth S-8136

Hermle Machine Co.

Franklin, WI

hermlemachine.com

SWISS-STYLE MACHINING

A new product line-up from Tsugami will include the S206 20mm CNC Precision Automatic Lathe with backworking Y-axis; the SS26 26mm Chucker Convertible Super Swiss Turn; and the SS207 20mm Super Swiss Turn with B-axis. All models feature opposed gang slides and Tsugami's user-friendly automatic programming system that permits true simultaneous operation of the main and sub-spindle in order to maximize machining capabilities and flexibility.

In addition, Rem Sales will display several Swiss-style machines currently within the Tsugami product line – the SS32 Super Swiss Turn, the BH20 and BH38 premium CNC Precision Automatic Lathes, and many more.

IMTS Booth S-9410

Rem Sales LLC

Windsor, CT

tsugamiusa.com





CNC ROTARY TRANSFER MACHINE

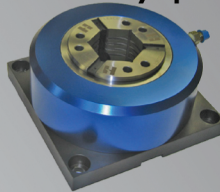
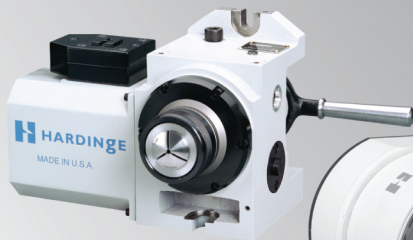
The Swiss-built Precitrame CNC rotary transfer machine includes up to fourteen 6,000rpm spindles, NC-controlled rotary table, and fourteen 120mm floating fixtures. Positioning accuracy of the fixture system is 5µm. All spindles include manual quick-connect clamping and/or coolant-through-spindle and may be configured for horizontal or vertical operation. Equipped with the Siemens 840D CNC, the multi-station machine with automated material handling is ideal for high production of precision parts. Parts are loaded and unloaded automatically. To assure accuracy, the part is clamped once at the first station and remains on the fixture through each station before it is released at the last station. A Stäubli poly-articulated 6-axis robot loads/unloads parts into and out of the machine.

IMTS Booth S-8966
Bohle Machine Tools Inc.
Plymouth, MI
bmtbohle.com

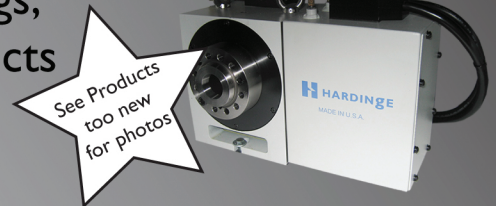
See Hardinge Workholding at IMTS

See us at Booth S-8348

New Products, expanded product offerings, the latest spindle tooling and rotary products



FlexC Collet Block



See Products too new for photos



- A complete line of rotary systems
- The FlexC Collet System with new sizes available and the *all new* Collet Block
- Special Workholding Applications on display



Contact Hardinge at 800-843-8801 or www.shophardinge.com. Visit the Workholding blog at blog.hardingeworkholding.com

HARDINGE

BRIDGEPORT

HAUSER

KELLENBERGER

TSCHUDIN

JONES & SHIPMAN



SLIDING HEADSTOCK, AUTOMATIC LATHE

The TRAUB TNL18 sliding headstock automatic lathe and its variant, the TNL18P production machine, will be on display.

The TNL18 can be changed over in minutes to produce precision parts with or without a guide bush for long or short parts from bar up to 20mm diameter. Up to three tools can be on the part at once. The tool capacity of the TNL18 can be increased to as many as 54 tool places through dual- and multi-holders while high-precision, fast turret indexing enables a very fast chip-to-chip time of 0.3 seconds. The machines are ideal for medical component machining, delivering precision and qualified surface finish in a single operation.

IMTS Booth S-8136

Index Corp.

Noblesville, IN
index-usa.com



AUTOMATIC BAR LOADER

The Hydrobar Sprint 542 automatic bar loader feeds 12ft round, hexagonal, or square bar stock with diameters from 1/4" to 1-5/8" into fixed or sliding headstock turning machines. A programmable, fully-automatic, hydrostatic front stabilizer dampens vibrations between the barfeed and the lathe spindle, enabling users to operate at optimum spindle speeds while maintaining cutting accuracy. Hydrobar Sprint 542 uses round, elongated guiding elements that open for new bar loading and then close for the entire machining process. To further enhance productivity, complete diameter changeovers take less than 8 minutes using quick-change guiding elements that require no tools.

Also on display will be the Turbo MH500 filtering chip conveyor and LNS' new Ethernet Communications System.

IMTS BOOTH S-9272

LNS America Inc.

Cincinnati, OH
lns-america.com

PRODUCING PRECISION TURNED PARTS

The ZPS Swiss series covers the range from 3mm to 32mm bar diameter and is designed for continuous or series production of precision turned parts. Equipped with GE Fanuc 160i control systems, drives are capable of handling up to 12 controlled axes. The specially developed programming software, Swiss Plus, simplifies the programming so the programmer takes in consideration only the X- and Z-axes during programming just as on typical 2-axis CNC lathes. Machining a part with up to four tools cutting simultaneously is possible, and the sliding headstock provides up to 250mm stroke that enables part machining in succession at one collet clamping. There are 23 tool stations and 14 stations can be driven. Also displayed will be the ZPS 867 CNC multispindle production center.

IMTS Booth S-8640

ZPS America LLC

Indianapolis, IN
zpsamerica.com



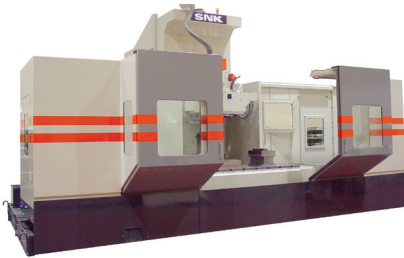
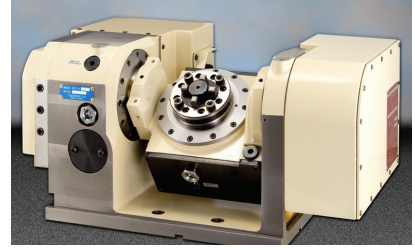


ROTARY TABLES

The Tsudakoma RTT-111,CA is a drop trunnion tilting rotary table where the top surface of the spindle is the center line of the tilt axis. Two pneumatic rotary joints on the rotary axis allow automated clamping/un-clamping of the system 3R chuck and pallet system. The RTT-111,CA may also be equipped with chuck and pallet

systems from Hirschmann, Erowa, and other manufacturers.

IMTS Booth S-9153
Koma Precision Inc.
E. Windsor, CT
komaprecision.com



VERTICAL COLUMN 5-AXIS PROFILER

The FSP-80V vertical spindle 5-axis profiler productively and precisely machines hard metals, including titanium, Inconel, stainless steel, and more. For stability in cutting hard materials, this profiler boasts a powerful 30hp/22hp gear-driven high torque spindle with 1,185Nm of continuous spindle torque. The machine utilizes the Big Plus spindle adaption system to provide heavy cutting capability. Speed and accuracy are achieved with the FSP-80V's components that move simultaneously through the CNC control. Featuring a highly rigid double pinion-driven A/B axis rotation, the FSP-80V is designed for stable, continuous 5-axis machining. The table size of the FSP-80V is 800mm x 2,000mm and offers a table carrying weight capacity of 8,800 lb.

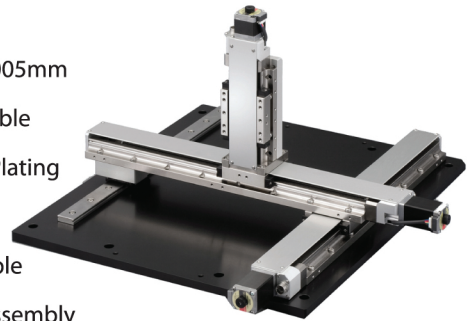
IMTS Booth S-8936
SNK America Inc.
Elk Grove Village, IL
snkamerica.com



KXL Series Long Stroke, High Accuracy Stage System

KXL CAVE-X Linear Ball Guide Stages

- Positioning Repeatability $\pm 0.0005\text{mm}$
- X, Y and Z combinations available
- SUS440C & Electroless Nickel Plating
- Strokes up to 300mm
- Pre-assembled systems available
- No brackets required for X-Y assembly
- Easy to use Cool Muscle motor options
- Fast delivery times



The KXL line of precision stages offers a new level of ease and integration to OEMs and researchers.

With the precision of much smaller cross roller stages, the KXL provides much longer strokes without compromising positioning accuracy.

Coupled with Cool Muscle integrated servos, multi-axis systems are vastly simplified by removing both control and drive boxes.



Myostat Motion Control Inc.
Automation Components and Precision Mechatronic Solutions
www.myostat.ca • +1 905-836-4441 • info@myostat.ca



COMPACT HORIZONTAL MACHINING CENTER

Mycenter-HX400iSII has a small footprint but the power of a workhorse in the 13kw AC motor, rock-solid hardened boxways, rigid #40 taper spindle, and the freedom of a standard full fourth axis rotary table. The HX400iSII comes standard with a 20,000rpm, energy efficient, four-step gear-driven dual contact spindle. The standard full fourth axis rotary table is designed with a direct drive motor enabling speeds of 125rpm and positioning of ± 2.5 arc/sec, reducing part cycle times, eliminating backlash, and providing a firm, rigid platform for highly demanding applications.

Also shown will be the Mycenter HX400iF HMC and the Mycenter HX800i HMC.



IMTS Booth S-9148

Kitamura Machinery of U.S.A. Inc.

Wheeling, IL

kitamura-machinery.com



HIGH-PRECISION, HIGH-PERFORMANCE

Hardinge T 42 Super-Precision turning centers are for 2-axis high precision machining or complex multi-tasking operations that require a high level of precision, delicate part handling, and parts made complete in a single setup. High-Performance and Super-Precision high productivity packages are available to choose from with features that include, but are not limited to, live tooling with C-axis, sub-spindle, Y-axis, main spindle parts catcher, and more. Also shown will be the Bridgeport GX-1000 OSP VMC; the Kellenberger Kel-Vera high-precision cylindrical grinding machine; and the Bridgeport 50-taper VMC while the workholding division of Hardinge will display Hardinge FlexC collet systems and the GD210LP and GD160LP rotary tables.

IMTS Booth S-8348

Hardinge Inc.

Elmira, NY

hardinge.com

CNC SWISS-TYPE MODELS

With a variety of standard features traditionally offered as optional upgrades, Nexturn's E Series of 7-axis Swiss turning machines presents manufacturers with a comprehensive approach to the most demanding jobs. Designed to minimize the effects of thermal displacement, machines in the E Series excel at providing consistency and repeatability over extended periods of production. The line includes four models from 20mm to 38mm capacity. All models are equipped with Fanuc 31 controls. Two new models, SA-20B and SA-32B will also be on display.

Additionally the LP-18D, an 18mm capacity machine will also be on display.

IMTS Booth S-8646

TMT Swiss/Nexturn Co. Ltd

Seabrook, NH

tmtswiss.com





LATHES AND TURNING CENTERS

The enhanced E models of the Cincom L20 and K16 Swiss type lathes offer greater feature/cost benefits and improved tooling flexibility. The Cincom L20E offers a wide variety of redesigned L20 tooling as well as a rich array of NC functions. Citizen's control system enables smooth motion at high speeds and the increased rapid feedrate of 32mpm. The Cincom K16E offers faster rapid feedrates, improved axis deceleration/acceleration times of the axes, and faster program processing provided by the new control system.



IMTS Booth S-9419

Marubeni Citizen-Cincom Inc.

Allendale, NJ
marucit.com

HIGH PRESSURE COOLANT SYSTEMS

Several models of high pressure coolant systems, including its new programmable nozzle Z-Cool, will be on display at IMTS. Model types include reservoir pumps for a broad range of CNC machine tools including machining centers, 3- and 4-axis lathes, multifunction machines, and twin turret machines; Swiss- and gang-tooled lathe pumps; and an economical pump for general use.



IMTS Booth S-9410

MP Systems

E. Granby, CT
mp-systems.net

MULTI-SPINDLE MACHINING



STAMA has implemented the 2 Plus 4 principle, in projects worldwide, resulting in radically reduced cost per part scenarios for its customers. However, a four-spindle solution requires a tool magazine to handle four times as many tools. The STAMA MC 531/TWIN² is equipped with 56 tool places in the standard version, for example, with options for magazines up to 120 tools. Already in full production use at a STAMA customer is a new four-spindle TWIN² machining center.

IMTS Booth S-8966

STAMA America

Itasca, IL
stama-america.com

IMTS Booth #W-2172

www.THINBIT.com
KAISER TOOL COMPANY, INC. • 888-THINBIT • 888-THINFAX

We Can Do That!

COMPLETE SOLUTIONS FOR INTERNAL AND EXTERNAL LATHE OPERATIONS

• GROOVING • FACE GROOVING • THREADING • PARTING • BORING • 100,000 STANDARD ITEMS IN STOCK • FAST DELIVERY ON SPECIALS •





CNC FOR COMPLEX MACHINING

The ST-38's innovative triple-turret design was specifically created to capitalize on simultaneous capabilities in an effort to reduce overall machining time – a significant benefit realized by the medical, aviation, and automotive industries. With deep-hole drilling on front and rear ends of components parts, the ST-38 offers high speed and universal control. As true of every Star CNC product, this machine is equipped with the company's proprietary motion control feature that further improves productivity with higher accuracy. The ST-38's flexible tool post design also allows for additional tools to be incorporated to both increase functionality and to enhance overall machining.

IMTS Booth S-8559

Star CNC Machine Tool Corp.

Elk Grove Village, IL

starcnc.com



FIVE-SIDED / 5-AXIS MACHINING CENTERS

The VMX30U provides X, Y, Z travels of 30", 20", 20.5", a 12K spindle standard with 15K high speed and 10K high torque options available, a 24-station swing-arm automatic toolchanger, and X, Y, Z rapids of 1,378", 1,378", and 1,181"/minute. Hurco offers WinMax conversational programming, while the flexibility of Hurco's control also allows shops to use existing 3-axis CAM systems to produce G-code programs for each side of a multi-sided part and then combine them with the simple addition of a transform plane code. Hurco also offers the ability to place part after part on the table without having to repost the G-code program by using tool center point management.

IMTS Booth S-8319

Hurco Companies Inc.

Indianapolis, IN

hurco.com

HORIZONTAL BORING MILL

Model BMC-110R2 horizontal boring mill features stress relieved Meehanite castings for all major components, and utilizes induction hardened boxways on all three axes. The headstock, column, base, and cross slides are all lined with turcite providing excellent wear and slip stick characteristics. The BMC-110R2 is equipped with a 60-station automatic tool changer and can be equipped with an optional 90-station tool magazine. The BMC-110R2 has a large 56.69" x 62.99" worktable with a table load capacity of 13,889 lb. The machine comes standard with a powerful 35hp, 50 taper spindle. A two speed geared head is standard allowing for maximum metal removal during heavy machining operations.



IMTS Booth S-8058

Femco Inc.

Garden Grove, CA

femcousa.com