



SENNBOGEN®



PEOPLE. PARTS. SERVICE.

PURPOSE-BUILT
MATERIAL HANDLERS FOR

**WASTE
HANDLING**

The Waste Handling Industry

The endless stream of commercial, industrial, and municipal solid waste (MSW) calls for pace and meet diversion targets. SENNEBOGEN provides proven solutions to move more costs and maintaining a safe work environment.

SENNEBOGEN is the industry's preferred choice for:

SAFETY

- Compact swing radius, 360° loading reduces traffic in confined workspaces
- Custom limit switches and stops ensure safe boom operation indoors
- Clear 360° visibility and dual safety cameras
- Sliding door entry, bulletproof glass, permanent catwalks
- Optional electric drive for quiet, emissions-free work environment

FLEXIBILITY

- Machines built-to-order with your choice of booms & sticks, undercarriages, and mounts
- Wide selection of interchangeable attachments for loading and sorting operations
- Smooth, precise hydraulics for waste handling versatility, fast cycle times and efficient throughput

BUILT-TO-ORDER WASTE-HANDLERS FROM 48,000 TO 220,000 LBS.

MODEL	NET POWER		OPERATING WEIGHT		MAX REACH	
	WHEELS	TRACKS	WHEELS	TRACKS	WHEELS	TRACKS
818 M / R-HD	132 HP (98 kW)	132 HP (98 kW)	48,060 lb (21,800 kg)	55,115 lb (25,000 kg)	32'8" (10 m)	29'5" (9 m)
821 M / R-HD	141 HP (105 kW)	141 HP (105 kW)	52,800 lb (23,950 kg)	57,982 lb (26,300 kg)	36' (11 m)	36' (11 m)
825 M / R-HD	197 HP (145 kW)	197 HP (145 kW)	57,600 lb (26,120 kg)	72,300 lb (32,800 kg)	45'11" (14 m)	45'11" (14 m)
830 M / R-HD	225 HP (168 kW)	225 HP (168 kW)	84,900 lb (38,510 kg)	96,780 lb (43,900 kg)	55'9" (17 m)	55'9" (17 m)
835 M / R-HD	305 HP (224 kW)	305 HP (224 kW)	100,000 lb (45,360 kg)	120,151 lb (54,500 kg)	59' (18 m)	59' (18 m)
840 M / R-HD	305 HP (224 kW)	305 HP (224 kW)	100,000 lb (45,360 kg)	130,072 lb (59,000 kg)	65'7" (20 m)	65'7" (20 m)
850 M / R-HD	355 HP (261 kW)	355 HP (261 kW)	142,600 lb (64,682 kg)	151,016 lb (68,500 kg)	61'4" (18.7 m)	61'4" (18.7 m)
855 M / R-HD	300 HP (224 kW)	300 HP (224 kW)	169,756 lb (77,000 kg)	182,984 lb (83,000 kg)	68'10" (21 m)	68'10" (21 m)
860 M / R-HD	364 HP (268 kW)	364 HP (268 kW)	169,756 lb (77,000 kg)	192,905 lb (87,500 kg)	75'5" (23 m)	75'5" (23 m)
870 M / R-HD	355 HP (261 kW)	355 HP (261 kW)	217,705 lb (98,750 kg)	220,200 lb (99,880 kg)	68'10" (21 m)	68'10" (21 m)

Standard Features On All Models

Eco Mode • Load sensing, flow on demand hydraulic system • Rearview & right side view camera system • Guarding • Catwalk with handrail • Sliding Cab Door • Automatic climate control (heater / AC) • Bulletproof windshield & skylight • Heavy-duty designed material handling undercarriage

y Never Sleeps!

dependable, efficient equipment that can keep material efficiently, tirelessly, while reducing

LOW OPERATING COST

- “Green Energy” fuel savings with Tier 4F diesel engines
- Mobile and stationary solutions for electric-drive power options
- Industry-standard off-the-shelf service parts
- No “black box” electronics; simple hydraulic controls for easy troubleshooting



Quiet efficiency for Transfer Stations

- Low noise, low emissions, high-rise visibility for safe operation in indoor facilities
- Compact footprint, long reach, and 360° loading for efficient processing in confined spaces
- Efficiently sort and load multiple streams with minimal machine movement



Resilient maintainability for Material Recovery Facilities (MRF)

- Resist dust, grit, and heat with flow-through cooling, smart hydraulics, and automatic reversing fan
- Easy ground-level servicing and maintenance with industry-standard parts
- Available with emissions-free eGreen electric drive or PowerPack option for low energy-efficient operating costs



Dependable throughput for Landfill Sites

- High strength, long reach, and fast duty cycles keep truck lines moving smoothly
- Simple, computer-free design assures dependable continuous service with minimal downtime
- Elevating, climate-controlled Maxcab ensures operator comfort and jobsite safety

See more SENNEBOGEN waste-handlers on the job @ sennebogen-na.com/jobsite-waste

Upgrade Your Fleet With Purpose-Built Waste-Handlers Matched To Your Operations

Whether you operate a landfill, MRF or transfer station, every day brings tons of new material that you need to move. In every town and city, fleets of wheel loaders are tasked with making sure the waste stream flows smoothly. But in recent years, many equipment managers are looking to purpose-built material handlers to replace or complement traditional wheel loaders.

SENNEBOGEN waste-handlers can have distinct advantages over other loaders in a wide range of applications. Before you make the switch, let's look at the wide range of choices available to you, so you can spec the machine that best matches your operation.

Operator station

The hydraulically elevating Maxcab is one of the most distinctive and valued features of SENNEBOGEN material handlers. Operators are able to rise up to a wide-angle view of the work zone, improving safety for others in the facility. This vantage point provides a direct view into trucks and hoppers for faster, more accurate loading. It also gives a better view of the pile when sorting. The upper carriage can also be mounted on pylons for additional height.

Visibility is also enhanced by floor to ceiling windows on all sides and through a skylight. With dual safety cameras, standard on all SENNEBOGEN models, the operator has a 360° view of the loading area and surrounding traffic. Bulletproof glass is also standard, giving operators added protection from flying debris. Metal safety grills are also offered for severe environments.

The climate-controlled Maxcab ensures all-season comfort for operators, and also protects their health with proper air filtration.



In stationary or mobile applications, rubber-tired material handlers provide excellent agility for operating in confined spaces.

Undercarriage

All SENNEBOGEN waste-handlers are offered with a full selection of undercarriages: crawler tracks, rubber-tired wheels or on fixed pylons of various heights. The same base models can be provided with custom mounts such as rail trucks or gantry frames.

Crawlers are often favoured for increased traction on soft soils or for greater stability working on piles. Rubber tracks are often preferred for indoor applications to reduce damage to floors. Wheeled models offer much greater mobility for maneuvering easily indoors

and for moving between work stations in a large facility.

Boom and swing

The boom and stick form the business end of the material handler and is the key to efficient throughput. While the assembly looks similar to excavators', the engineering is quite different due to the focus on lifting and swinging loads vs digging below grade.

The ability to swing loads instead of pushing or carrying material is a primary advantage of purpose-built material handlers over wheel loaders. With their long reach, SENNEBOGEN waste handlers can serve different loading and processing stations without having to maneuver or relocate the whole machine. SENNEBOGEN's square footprint, with the swing ring centered on the



The hydraulically elevating Maxcab gives operators an optimal view of the work zone for faster loading and increased safety.

undercarriage, simplifies handling for operators by providing the equal load limits through 360° of swing, not just the maximum lift in front of the machine.

SENNEBOGEN's modular approach to engineering allows multiple configurations of optional booms, sticks, and pin placements to match your load-handling requirements. For operations under roof, adding limit stops will free operators to lift and move loads quickly, but safely.

Attachments

With a quick-change coupler, your SENNEBOGEN material handler can be an incredibly versatile addition to your fleet. Orange-peel grapples sort and load incoming material and pick out potentially hazardous items; various buckets move heavy and wet waste, compost, or chips; lifting magnets pull out ferrous metals to feed a valuable revenue stream. SENNEBOGEN hydraulics are even powerful enough to operate scrap shears for reducing oversize items and C&D waste.

Power

Energy use is a significant part of operating costs for waste-handling sites, especially for municipal facilities with little or no offsetting revenues. SENNEBOGEN's full line of Tier 4F machines achieve a valuable baseline of efficiency, in part due to their ability to move material productively without moving the machine itself. Most applications will also benefit from SENNEBOGEN's automatic reversing fan, designed to clear dust from the

cooling system and keep the engine running optimally.

SENNEBOGEN leads the industry in electric-drive technology for material handlers. Electrically powered machines typically save significant energy costs over diesel power. They also result in reduced maintenance time, lower parts costs, longer service cycles and less downtime – with no stops required to refuel! Recent innovations provide a choice of mobile electric-drive packages. SENNEBOGEN offers wheeled units tethered to the power supply by a retractable cable, and “power pack” models that are able to travel longer distances with built-on diesel genset.

Wheel loaders will always be essential equipment for most waste-handling sites. However, purpose-built waste handlers have proven they are a valuable alternative for adding safety, production, cost-efficiency, and versatility. With today's range of models and configurations, your equipment dealer can help you match up the right machine to get the most from your waste-handler investment. ■

Mounted on a crawler undercarriage, the material handler has a stable working platform for operating on piles or on soft ground.



With the cab in the raised position, the Willimantic operator has a clear view of the shaker table.



“Listening” Seals The Deal For SENNEBOGEN 818 At Willimantic Waste

Willimantic, CT - Tim and Tom Devivo had decided that, after 30,000 hours of dependable service, the excavator in their C&D processing plant was due for retirement. While the old machine had been their “workhorse” for years, the brothers also knew there were now more efficient options available to their operations. This time, they were shopping for a purpose-built material handler.

“The old one didn’t have an elevating cab,” says Tim Devivo, noting that high-rise visibility would help operators to sort the incoming bulk items delivered to the site. “A purpose-built machine gives us fuel savings, too, which add up over eight to ten-hour shifts every day.”

Commitment to service

A search of local equipment dealers narrowed their choices down to two

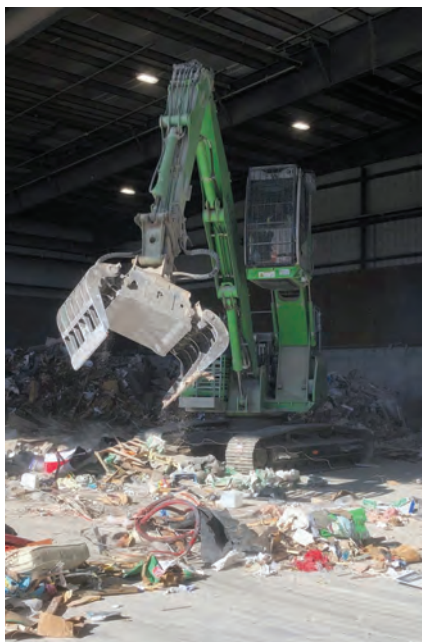
contenders. By Spring of last year, they were decided on a SENNEBOGEN 818 R-HD from the nearby branch of Tyler Equipment. “We knew what we wanted,” Devivo continues, “but the other company just wasn’t listening. We don’t need a wheeled machine here; it sits in one place all day, picking through the material as it comes in and loading the shaker table. I felt very comfortable with Tyler, with their

service and warranty package. They made the commitment to respond within 24 hours when we need service.”

Constantino Lannes, President of SENNEBOGEN LLC, praised Tyler for responding to the business needs of their customer. “This is a core value at SENNEBOGEN: to think ‘beyond the machine’ and look at what the customer needs to be successful. The waste stream at Willimantic never stops, so we have to be ready to keep them up & running throughout the life of the machine.”

Improved control and safety

The unit that Tyler delivered is an 818 R-HD E-Series fitted with a 30-inch Pemberton Rotating Basket Sorting Grapple. Its K10 ULM boom provides a reach of up to 33'2" (10.1 m), lifting a maximum load of 15,870 lbs (7.2 tonnes.) Devivo says his operators appreciate how SENNEBOGEN's hydraulic controls allow operators to handle the grapple easily to sort right from the pile. Tyler also had the 818 equipped with limit stops on the boom that let the machine work quickly



An elevated view and long reach lets the operator quickly sort and load the pile.

and safely indoors. According to Devivo, “the lock allows it to reach its maximum height without hitting the roof – it eliminates operator error.”

The 818 is now on duty sorting and loading as much as 500 tons of material a day: a typical day runs about 250 to 350 tons. Devivo's C&D operation is on one of three adjacent Willimantic sites, including their maintenance yard and MRF facility. C&D processing begins with Willimantic's large bin fleet for construction and demolition projects, along with household bin rentals collecting bulk items that range from sofas to hot water tanks. The bin operation, including three feeder stations north of the city, serves a 30-mile radius in eastern Connecticut.

Family values

Willimantic Waste began recycling metal, rags, and paper in the 1940s

Comfortable Maxcab with A/C keeps operator safe from the harsh conditions of handling C&D waste.

with the Devivos' grandfather, Patrick. Their father, Jim, expanded the business into a full range of recycling and collection streams for residential and commercial customers. Today, the fourth generation of the Devivo family is also taking place in the family enterprise. Tim Devivo acknowledges that family values shared with Tyler Equipment and SENNEBOGEN – also multigenerational businesses – help the companies see eye-to-eye. “Investing in the community” with innovations in environmental efficiencies and advanced recycling practices is also part of “listening” to the needs of today's customers. ■

BEYOND THE MACHINE

WE ARE ON A MISSION
to maximize your uptime and reduce your Total Cost of Ownership.

You trust SENNEBOGEN for industry-leading productivity, safety, and efficiency. Now think "beyond the machine" with life-long SENNEBOGEN support.



PEOPLE

Expert application support

Innovative financing



PARTS

Local in-stock parts

Prepackaged service kits



SERVICE

Factory-trained technicians

Free technical training



FIND YOUR LOCAL DEALER: SCAN OR VISIT

www.sennebogen-na.com/dealers

SENNEBOGEN®