



PURPOSE BUILT

for Demolition and
C&D Handling

SENBOGEN®
Thinking Beyond the Machine



A productive, efficient and safe solution for waste

For decades, Sennebogen has supplied material handlers to industry sectors that include waste, scrap, ports and logging. Our business has grown within these diverse sectors by listening to our customers' needs—increasing production, providing standard safety features that go above and beyond our competitors and offering electric-driven green solutions that support their company visions.

Operators in the demolition and C&D sectors often have believed that material handlers were not for them. We've shared some stories here that illustrate how our machines have benefitted contractors.

Similarly, Sennebogen's customer-first culture has allowed us to supply powerful solutions for heavy and high-reach demolition. Our high-reach capabilities tower over the industry, with 118 feet of reach and a lift capacity of 8,000 pounds fully extended!

As a family-owned and customer-driven organization, we appreciate that our customers move our company forward. By listening to our customers, we have learned how important it is to respond quickly to machine service needs. When your machine is down, your operation stops.

For this reason, Sennebogen is continuously enhancing our support network. We have a network of world-class heavy-equipment dealers and nearly 100 additional Authorized Service Providers (ASPs). Additionally, we have a team of factory technicians ready to fly out, at no cost, to any customer site in the event they are needed.

Sennebogen material handlers and heavy demolition machines deliver lower operating costs per hour and incorporate safety features that lead the industry. Our lower operating costs are achieved through faster cycle times and optimal fuel efficiency to maximize profitability.

Hydraulically lifting cabs ensure superior visibility, allowing operators to prevent unwanted material from entering process equipment and delivering unmatched job site visibility. Our extended reach eliminates unnecessary machine movement increasing flexibility and productivity.

We continue to invest in supporting our customers. Sennebogen North America, headquartered in Stanley (Charlotte), North Carolina, carries \$48 million dollars in spare parts inventory and maintains a 98 percent same day parts availability!

Our facility boasts a technician training center. We remain the only manufacturer of material handlers that offers the same level of training to our customers as we provide to our dealers and ASPs, free of charge. With hydraulic-over-hydraulic controls, no laptops or software are needed to troubleshoot a Sennebogen. This allows customers to service their own machines, increasing uptime and lowering operating costs.

We invite you to explore the Sennebogen product portfolio and to tour our North American headquarters. It would be an honor to be considered when next upgrading your material handling capacity. We look forward to earning your business and forming a long-term partnership.

*Sincerely,
Constantino Lannes
President & CEO
Sennebogen LLC*



Leading Through INNOVATION

SENNEBOGEN HAS A RICH HISTORY AND, IN JUST OVER HALF A CENTURY, HAS DEVELOPED INTO A WORLD-CLASS MANUFACTURER.

Sennebogen has been active in North America for more than two decades, delivering innovative machinery driven by a uniquely simple design approach. Since the early 2000s, Constantino Lannes, president, has led the company through years of continued growth.

We offer a customer-centric vision focused on building a world-class service and support network, heavily investing in parts inventory, implementing free customer technician training and keeping the Sennebogen product simple to work on and free of electronics.

The company's thirst for knowledge pushes it to learn about its customers' needs and what's required for them to be profitable. Standard machines often are adapted to meet those requirements, ensuring an unusual return on investment.

Sennebogen has adhered to a simple hydraulic-over-hydraulic operating system. No computers mean the machines are easy to troubleshoot and service, minimizing the need for costly dealer service calls.

Sennebogen's philosophy is to understand its customers and to provide comprehensive service and support to ensure maximum uptime reliability and performance. ■



1965



1976



1996



1968



1987



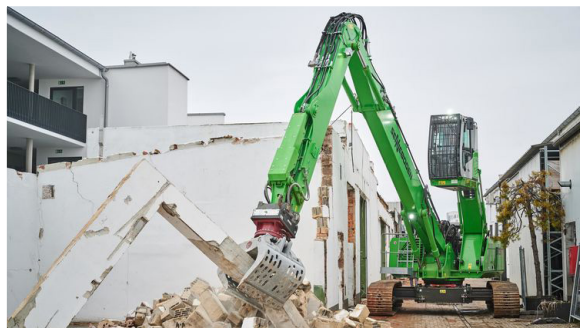
2004

A glance at Sennebogen's history

- | | |
|------|--|
| 1952 | Erich Sennebogen founds the company at the age of 21. |
| 1959 | Sennebogen develops the S803 material handler for agricultural purposes and for the construction industry. |
| 1969 | Sennebogen develops the fully hydraulic duty-cycle crane, SK15, the first of its kind in the world. |
| 1982 | We release our first pedestal-mounted scrap handler. |
| 1990 | We introduce the first pedestal-mounted material handler on a crawler under-carriage. |
| 1996 | Sennebogen introduces the Green Line material handler; it is painted green and focuses solely on material handling. |
| 2001 | Sennebogen establishes its North American headquarters. |
| 2002 | We are formally acknowledged for 50 years of manufacturing innovation and excellence. |
| 2003 | Constantino Lannes joins as president & CEO of Sennebogen LLC. |
| 2007 | Sennebogen becomes the market-share leader in material handlers sold in the USA. |
| 2009 | Our 54,000-sq.-ft. headquarters, parts and training facility opens in Stanley, NC. |
| 2013 | Responding to continued growth and customer demand, the Stanley facility expands to 100,000 sq. ft. |
| 2014 | Sennebogen furthers its commitment to training by expanding one of America's premier OEM training centers for heavy equipment. We remain the only manufacturer to offer our customers the same free training we offer our dealers. |
| 2019 | Sennebogen launches the 895, the largest hydraulic material handler in the world. |

SENNEBOGEN Photo Gallery

PURPOSE-BUILT DEMOLITION AND C&D HANDLING AT WORK ACROSS THE INDUSTRY



◀ The **SENNEBOGEN 825** tracked demolition machine is purpose-built with guards and outfitted for the most demanding demolition jobs.



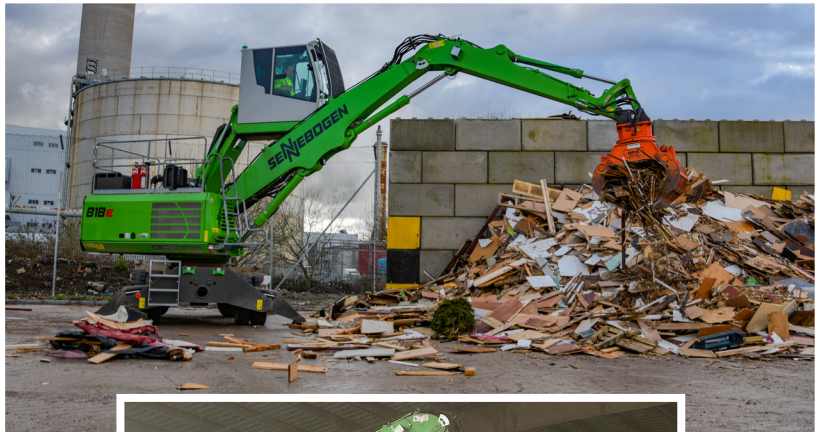
▶ The **SENNEBOGEN 830** tracked demolition machine features a telescoping undercarriage that hydraulically expands from the compact transport mode to wide-stance working platform for stability and safety. Sennebogen offers high-reach capabilities up to 118 feet of reach and a lift capacity of 8,000 pounds fully extended!





The **SENNEBOGEN 355** is a uniquely powerful and versatile waste handling machine. Its raised cab and extendable boom increase safety and deliver reach to manage stockpiles and loadouts.

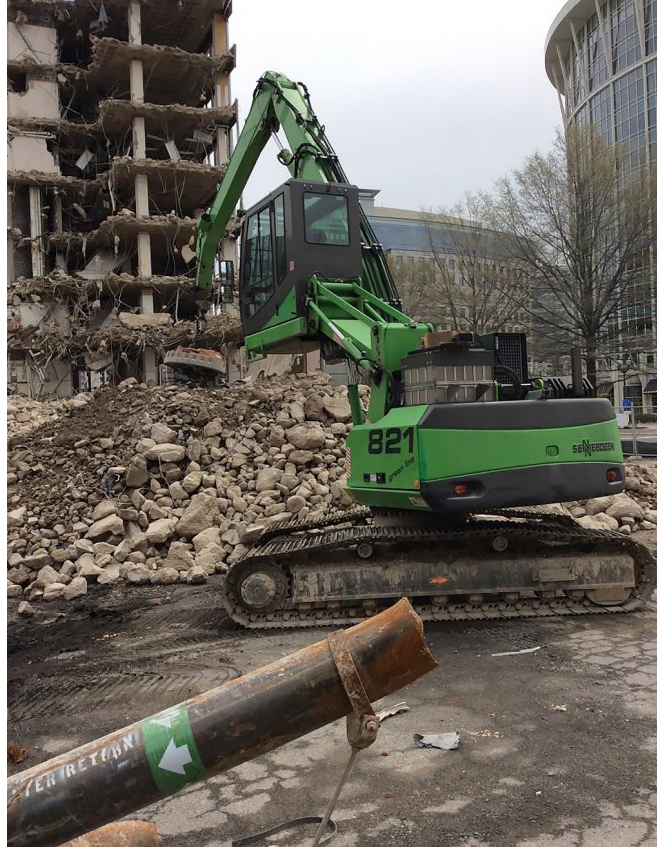
▶ The **SENNEBOGEN 818** making light work of handling C&D materials.



▶ The pedestal-mounted **SENNEBOGEN 818** is a purpose-built C&D and waste handling machine. Electrical power allows quiet, cost-effective and emissions-free operation.



▶ An electric-power **SENNEBOGEN 821** loading containers.



DC CONTRACTOR **CLEANS UP WITH SENNEBOGEN** TO CUT DEMOLITION COSTS

Celtic Demolition Inc. President and founder Ross Tumulty didn't know he needed a Sennebogen material handler in his demolition fleet. Now that he has one, the Sennebogen has become a necessary asset for his company to complete demolition jobs more efficiently and profitably.

Celtic Demolition, a full-service commercial demolition company, has served the metropolitan Washington, D.C., area since 1985. Well experienced in complicated and challenging demolition projects, Tumulty and Celtic Demolition have been leaders in adopting processes that achieve the most demanding goals for cost-efficiency and recycling.

"We had an opportunity to quote on a very large job—a 700,000-square-foot building demolition—but the customer would not allow any on-site crushing to take place."

Celtic needed a new solution to truck all the concrete to a recycler off the demolition site for crushing. The new process led Tumulty to Sennebogen.

"We have an excavator with a concrete pulverizer to do the primary demolition and a loader to build stockpiles of the material. The Sennebogen machine then sweeps the piles with a magnet to separate the metal and load it into a container," Tumulty explains.

RECOVERING COSTS

Tumulty realized that delivering cleaner concrete to the recycler would reduce his dump fees while selling the recovered metal from the concrete created a new revenue stream to offset project costs. "I talked to some of the scrap metal recyclers I know, and they all said

Sennebogen was the best machine for the job," he says.

The new unit in the Celtic fleet is an 821 R-HD green line material handler fitted with a 48-inch scrap magnet. The 821 R-HD is a compact 55,000-pound model mounted on crawler tracks and features the elevating Sennebogen Maxcab.

Tumulty reports that he was "pleasantly surprised" by the results of the project. "The shipped concrete is, I would say, 98 percent free of metals. It's so clean that our recycler took \$5 a load off his original quote, just because he liked the material," he says.

A VERSATILE SOLUTION

Once it arrived on site, the project manager found more work for the new material handler. A second application, which included loading sheet metal scrap into trucks, especially benefited from the elevating cab. As Tumulty points out, "Having a bird's-eye view into trailers is especially helpful for moving bulky material into the trailers. The high perch lets you see how you're loading the material; you can be more accurate and build the load evenly."

Although the Sennebogen machine was purchased for a solution to a specific need, Celtic now sees the new process as the go-to approach for moving and recycling material from the work site.

"Now that we've seen what we can do, it makes sense for us to continue this way. Our new process with our Sennebogen doesn't take up as much room on the job site as a crushing and screening plant. This makes it a safer and more cost-effective way to operate. It's a great tool for us; we are the only ones using it in the area, and it gives us an advantage when we're quoting."

METICULOUS MATERIAL HANDLING MAXIMIZES REVENUES

By the time Costello Dismantling was finished with its demolition of the 800,000-square-foot Quaker Fabrics textile mill in Fall River, Massachusetts, its crew had salvaged a treasure trove of southern yellow pine timber, massive granite blocks, concrete, bricks and metal. Of the 100,000 tons of mixed material removed from the site, less than 2,000 tons were sent for disposal. The rest was recycled, reused or applied on-site to offset fill costs.

When it comes to efficient and environmentally sound “deconstruction” methods, Costello Dismantling and its president, Dan Costello, are way ahead of the curve.

ON-SITE PROCESSING

At the heart of Costello’s dismantling operation is an inventory of equipment carefully chosen to sort and process materials right on the project site. When he’s adding to the fleet, from shears to material handlers, Costello says he looks for robust, versatile machines that he can apply across a number of project types.

“We look very carefully at each job to identify those materials that are most easily handled and recyclable; the highest and best use opportunities for each type of material,” says Costello. “We have tailored our equipment fleet and our personnel training to be disciplined between the different markets for materials.”

He recently acquired a fleet of mobile shredders to convert wood waste into graded fuel products, ultimately purchasing a new Sennebogen 821 material handler to feed the grinders using a mag-grab.

METICULOUS INFEED HANDLING

“The thing we learned early on was the need to meticulously manage the infeed,” Costello explains. “That mainly involves picking out any heavy metals before the load goes into the shredder. ... The mag-grapple gives us the capability to pull steel out of the wood, then load the wood into the grinder with the same grapple.”

“The Sennebogen does a nice job of handling timbers so we don’t damage them in sorting and loading,” he continues. “It handles the wood delicately and efficiently. We’re always looking for wood, carpeting, gypsum wallboards. ... It all requires a lot of very careful handling, and the Sennebogen gives us those handling characteristics that we appreciate.”



**WE’RE ALWAYS LOOKING FOR WOOD,
CARPETING, GYPSUM WALLBOARDS.
... IT ALL REQUIRES A LOT OF VERY
CAREFUL HANDLING, AND THE
SENNEBOGEN GIVES US THOSE
HANDLING CHARACTERISTICS THAT
WE APPRECIATE.”**

~ Dan Costello

Costello notes the 821 worked so well in the feeding application that he also sent it out on a demolition job to sort through mixed material and separate the iron. He describes the material handler as a secondary or tertiary machine on a project, following the primary machines that have extracted the material from the buildings already.

VISIBILITY AND CONTROL

Costello first became familiar with Sennebogen machines when his dealer, Woburn, Massachusetts-based C.N. Wood, supplied an 825 scrap handler to his scrap metal processing yard. “We found that, in addition to being well-suited to handling scrap, it’s very good at loading rail cars. We handle a lot of No. 1 bundles from our baling operation, [and] the Sennebogen just made handling and loading that material so much easier and more efficient than a conventional excavator.”

Costello says the elevated cab of the Sennebogen 825 material handler allows the operator to achieve more optimal loading and to complete the loading faster. Costello also cites the fast cycling of the purpose-built material handler and the intuitive controls as factors in the machine’s loading efficiency.

Visibility and ease of control were exactly the characteristics he was looking for in the on-site processing fleet. “One of the critical components of wood fuel product is to have absolutely no metal in there,” says Costello. “With the 821, our operators are able to look right into the grinder and into the conveyor as they feed the loads in. That gives us a second opportunity to see any bar or other metal that shouldn’t be going through.”

A “GREENER” FOOTPRINT

While producing wood fuel on the job site is a vital revenue source for Costello, he acknowledges that concrete and masonry material is by far the major component of any job.

“It’s not uncommon to generate 40,000 or 50,000 tons of concrete,” he says. “There’s a great environmental impact of being able to crush and reuse the material as fill, so the material never has to leave the site. You don’t have thousands of trucks leaving the site with debris, then an identical number of trucks coming back with another fill material. With small portable equipment, it’s very economical to crush that material to make a specified end product for less cost than the cost of transportation of trucking the material away,” Costello says.



MULTI-TASKING SENNEBOGEN 830 E DEMOLITION MACHINE TAKES DOWN VACANT FORTRESS IN GERMANY

After 10 years of seeing the former Wangler furniture store stand vacant, local residents in Regensburg, Germany, were pleased to see a crew from Metz GmbH arrive to tear down the building. At the center of the job site is a Sennebogen 830 R-HDD E Series material handler fitted with a variety of attachments to bring down and extract the material, sort it and load it for on-site crushing.

VALUED PARTNER ON THE BUILDING SITE

The 830 R-HDD E is a 90,000-pound (40,800-kilogram) Sennebogen machine on a crawler undercarriage that is specially equipped for the demanding conditions of demolition work. Easy to transport on a lowboy trailer, short set-up time and a flexible range of attachments are just some of the reasons why the contractor decided to purchase the Sennebogen machine.

MACHINE FLEXIBILITY

Whether equipped with a demolition grab, bucket or shears, the flexibility of the 830 demolition handler from Sennebogen's E Series is impressive.

Metz was founded in 2007 and specializes in full-service dismantling projects—from the controlled demolition of a structure to crushing and sorting, right through to the removal of the material. All of this work is carried out by the company's 25-person expert demolition crew.

Clearly, this one-stop approach requires machines that are as

flexible as possible, and Metz found them through working with Sennebogen and its local Sennebogen dealer.

STABILITY AND EXTENSIVE REACH

With a reach of 62 feet (19 meters) and a full width of 15 feet (4.5 meters), the 830's demolition ability is ideally suited to downtown demolition. "Despite its compact footprint, the machine is very stable. This is especially evident when we are working with large loads or reaching up high," says operator Andreas Feigl.

Another plus, Feigl says, is that the machine has a 360-degree working radius with equal load capacity in all directions. This provides an ideal view of the entire work area from the cab. The elevating Maxcab with a 30-degree tilt means that the operator can work comfortably at an eye-level height of 20 feet (6 meters). From the ergonomic comfort seat, the operator can control the shears, bucket or demolition grab with a direct view of the attachment, even when reaching the tallest part of the building.

ALWAYS AN EYE ON COSTS

Operating with reduced emissions is a vital responsibility. By doing so, contractors can be kind to the environment and their wallets.

"The Sennebogen 830 comes out really well in the time-money-precision equation," says Christian Metz, founder and managing director of Metz. "The low fuel consumption of its Tier 4F diesel engine and the reduced downtime with fewer refueling stops has completely won us over."

SENNEBOGEN

Service & Support

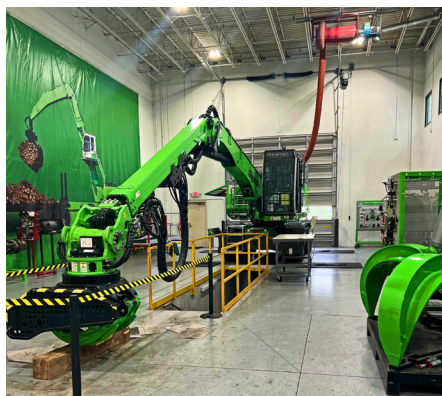


FROM ITS US HEADQUARTERS CAMPUS IN STANLEY, N.C., SENNEBOGEN PROVIDES UNMATCHED CUSTOMER SUPPORT AND SPARE PARTS AVAILABILITY.

TRAINING FACILITY

Supporting customers is so fundamental to Sennebogen that when it constructed its first facility in 2009, it integrated a state-of-the-art training center. Equipped with multiple classrooms and a fully functioning service bay to work on Sennebogen machines indoors, the facility is one of America's premier OEM training centers for heavy equipment.

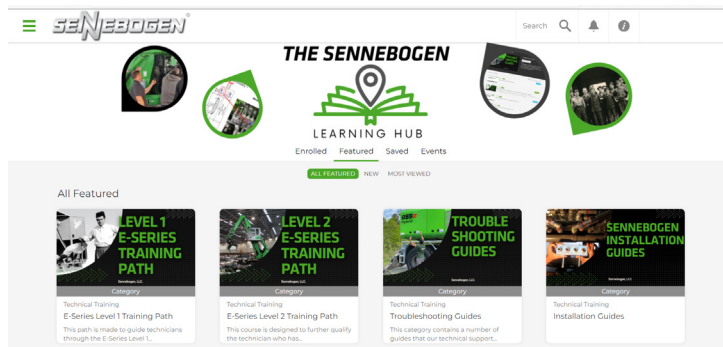
Sennebogen remains the only manufacturer that provides its customers with free training at the same level as its dealers. Training classes are held throughout the year at the Stanley facility.



Learn more about Sennebogen training.

LEARNING HUB

Reaching beyond classroom training, the Sennebogen learning hub is an online portal offering 24/7 virtual learning as well as troubleshooting. The hub is unique in the material handling industry, allowing customers to learn new techniques and procedures while also providing tools to troubleshoot operating issues. The Sennebogen learning hub is available to customers in North America entirely free.



The Sennebogen learning hub offers a variety of resources.



SERVICE & REPAIR PARTS

From major components to routine service parts, Sennebogen's 100,000-sq.-ft. warehouse maintains the largest inventory of material handler parts in the Americas. Sennebogen maintains stocks of every part for every model and type of machine currently in service, with a record of **98% order fulfillment** within 24 hours.

Sennebogen engineering relies extensively on industry-

standard parts for engines, hydraulics and electrical systems. Common service parts can be found easily and affordably through local industrial supply sources.

Sennebogen also works closely with its nationwide network of full-service dealers and authorized service providers to keep the most commonly required service and wear parts in stock for its customers' fleets.

"SMART PARTS"

Sennebogen offers two types of **pre-packaged parts kits** to simplify ordering and stocking and to streamline service calls. Uptime Kits and Preventive Maintenance Kits are all packaged to match specific machine model and series:

- One part number to order
- Save time sorting loose parts
- Ideal for stocking service trucks
- Save costs on common service parts

UPTIME KITS

Each kit combines all the parts and materials required to complete a type of specific maintenance task. Delivered in custom organizers, pre-sorted for easy identification. Its growing list of Uptime kits currently includes:

- Hydraulic service
- Electrical service
- Autolube service
- A/C service
- O-ring kits



Learn more about Uptime Kits.



PREVENTIVE MAINTENANCE KITS

PM Kits start with a checklist of service parts specified by the factory for each scheduled service interval for your machine model and engine. Eliminate costly picking time to prepare for each service call—simply pull today's PM Kit off the shelf! Available for 250-hour, 500-hour, 1,000-hour and 2,000-hour intervals.



Learn more about PM Kits.

SENNEBOGEN

in the field

SENNEBOGEN HAS INDUSTRY PROFESSIONALS, FULL-SERVICE DEALERS AND AUTHORIZED SERVICE PROVIDERS ACROSS NORTH, SOUTH AND CENTRAL AMERICA.

FULL-SERVICE DEALERS

These sales and service locations are operated by leading independent heavy-equipment dealers. Their Sennebogen-trained sales representatives and service technicians have extensive product line knowledge. This ensures the right machine for the right job with new equipment investments and rapid, experienced machine service when customers need it.

AUTHORIZED SERVICE PROVIDERS (ASPs)

Sennebogen has adhered to a simple hydraulic-over-hydraulic operating system. No computers mean the machines are easy to troubleshoot, but sometimes support and preventive maintenance are required. Sennebogen ASPs offer support service, dispatching Sennebogen-trained technicians fully qualified to work on Sennebogen machines no matter what's required.

REGIONAL BUSINESS MANAGERS (RBMs)

Sennebogen RBMs and applications specialists are direct representatives dedicated to supporting industry operators in analyzing their equipment needs and supporting them in new equipment investments.

SENNEBOGEN LLC

From its North American headquarters campus in Stanley (Charlotte), N.C., Sennebogen stands ready to support clients with more than \$48 million parts inventory, a state-of-the-art technical training center and an extensive team of product, parts and industry professionals.



**ACCESS A FULL LIST OF
SENNEBOGEN CONTACTS.**

SENNEBOGEN LLC

1957 Sennebogen Trail | Stanley, NC USA 28164

Sennebogen-NA.com

p: 1 704-347-4910 | e: sales@sennebogenllc.com