



# Case Study

## Maximizing Older Plants



# 2009 Bollegraaf System

- Built in 2009
- Tons



# Upgrade Challenges



WE'RE A SINGLE PLANT NETWORK –  
LIMITED SPACE



RELIANCE ON PARTNERSHIPS -  
COSTS OF DOWNTIME BY DIVERTING  
MATERIAL.

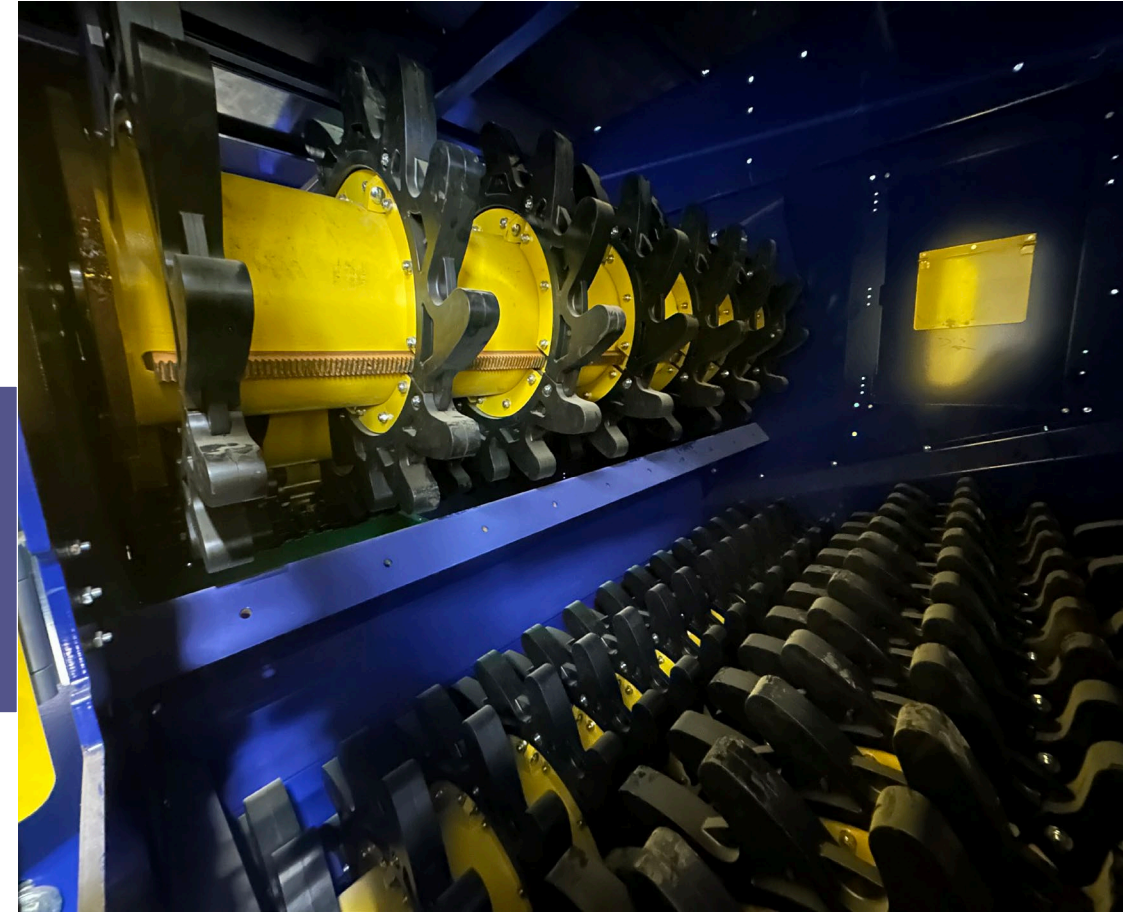




# Our Approach to Upgrades

Economics – Every project has to meet ROI standards and we usually start with these two questions:

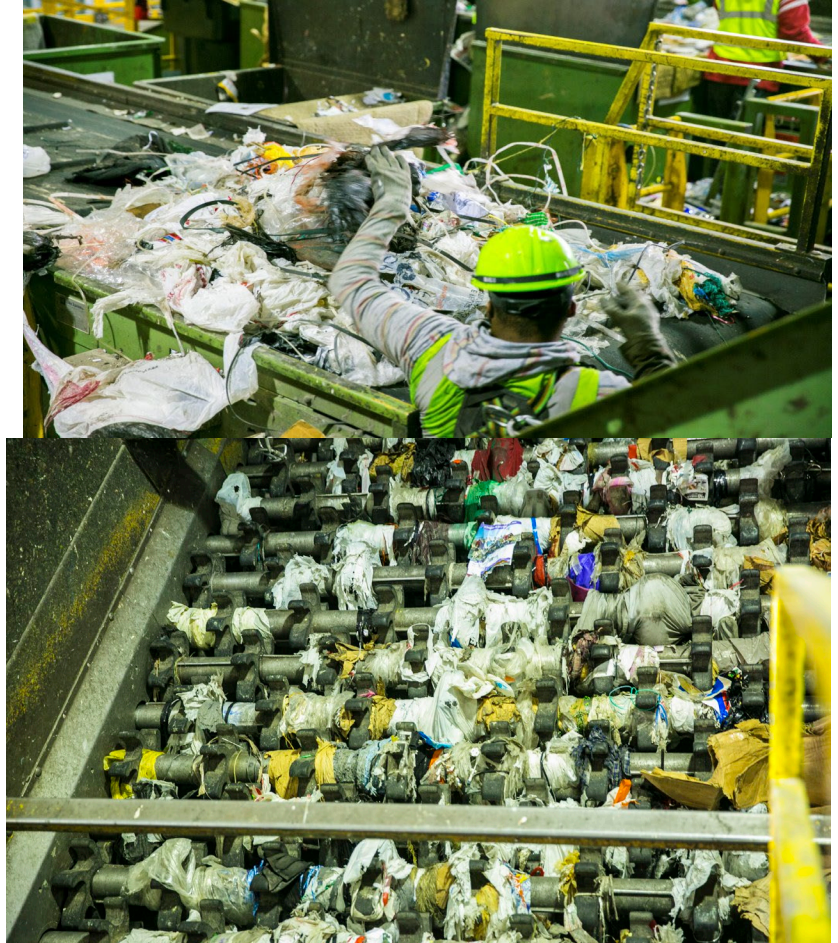
- Does it increase commodity revenue per ton?
- OCC Spacing - 2019



# Our Approach to Upgrades

Economics  
– Second  
Question?

- - Does it reduce processing costs per ton?
- 440 Non Wrapping Screens





# Our Upgrades

Optical Sorter  
Upgrade (2022)

Robot Project  
(2024)



# Maintenance - What has Worked

- Mechanics taking ownership of specific components
- Incentivizing your team
- Bring in OEM for inspections
- Keeping parts in stock is crucial