



## Unrivaed Customer Support.

Our service team is specially trained to install, start up, service, and troubleshoot your equipment at every stage of its life.

You won't find this level of dedication and expertise anywhere else.



203.967.1100 | [vdrs.com](http://vdrs.com) | [info@vdrs.com](mailto:info@vdrs.com)



## Supplier to 7 NWRA Recycling Facility of the Year WINNERS

**2015** Sims Municipal  
Recycling

**2017** FCC Environmental  
Services

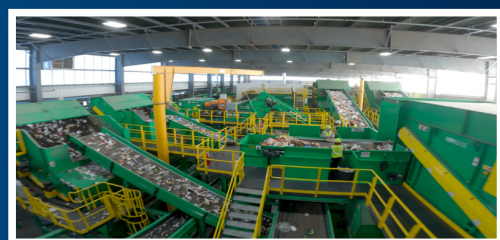
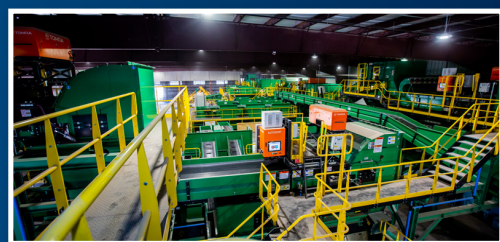
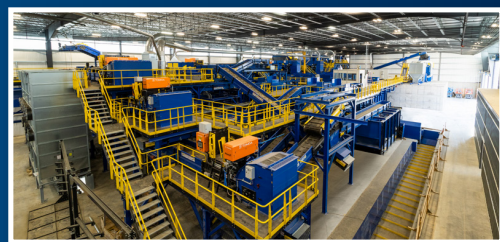
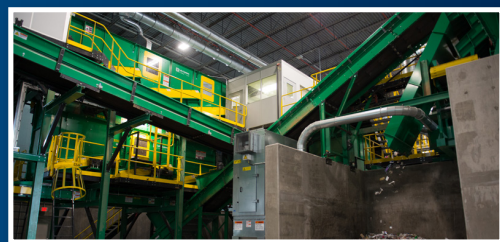
**2019** Republic Services

**2020** FCC Environmental  
Services

**2021** Mazza Recycling  
Services

**2022** GFL Environmental

**2023** Murphy Road  
Recycling, LLC



## Taking in the tons

Buoyed by upgrades, MRFs are scaling up their processing power and throughput.

**TEXT BY CHRIS VOLOSCHUK,  
RESEARCH BY THE RECYCLING TODAY  
EDITORIAL STAFF**

**M**any material recovery facilities (MRFs) across North America have benefited from facility and equipment upgrades in recent years, and their capacity for growth is on display.

In 2023, *Recycling Today* published its list of the largest MRFs in North America—based on numbers recorded in 2022—and found that the 75 largest MRFs shipped an estimated 8.5 million tons of recyclables. That number represented a sharp increase over the 5.8 million tons recorded in 2021, when the COVID-19 pandemic greatly altered residential and commercial material flows.

With the pandemic largely in the rearview mirror, MRFs have continued to show resilience and ingenuity to meet current needs. For example, months before the 2023 list was published, Rosemont, Illinois-based LRS opened its Exchange MRF in Chicago. The \$50 million investment can process 25 tons per hour and might be expanded to 35 tons per hour in the future. At the time of the facility's opening, LRS said the Exchange was projected to divert 224 million pounds of recyclables per year.

Elsewhere, Circular Services (formerly Balcones Recycling) opened a new 50-ton-per-hour facility in San Antonio last year, equipped with what the company said at the time was the first fully automated container line in the U.S. Also in 2024, Cincinnati-based Rumpke Waste & Recycling opened the \$100 million Rumpke Recycling & Resource Center in Columbus, Ohio, a state-of-the-art facility capable of processing up to 250,000 tons of recyclables per year from more than 50 Ohio counties.

In its 2025 sustainability report, Houston-based WM says it upgraded or built 12 recycling facilities as part of its plans to invest more than \$3 billion to strengthen its recycling and renewable natural gas infrastructure through 2026. Last year, WM says it recovered more than 16 million tons of material for recycling, increasing the company's material recovery capacity by 545,000 tons from 2023.

This year's list of North America's largest MRFs is based on total tonnage of recyclables received in 2024 as reported by the facilities. Estimates were necessary in some cases because *Recycling Today* did not receive information from these MRFs as of press time.



While some tonnages appearing on the list are marked with an asterisk to indicate estimates, WM reported the rated capacity of its largest MRFs, which are noted on the list with a caret symbol.

Of the MRFs listed, the Roseville, California-based Western Placer Waste Management Authority facility tops this year's list with 395,246 tons received, followed by newcomer LRS Exchange, with 286,317 tons. A facility that climbed into the top 10 this year is San Jose, California-based GreenWaste Recovery Inc., which reported receiving 245,035 tons—placing it sixth on the list.

Based on estimated tonnage, the city of Toronto's MRF operated by GFL Environmental Inc. ranked third on the list, maintaining a top position similar to previous editions.

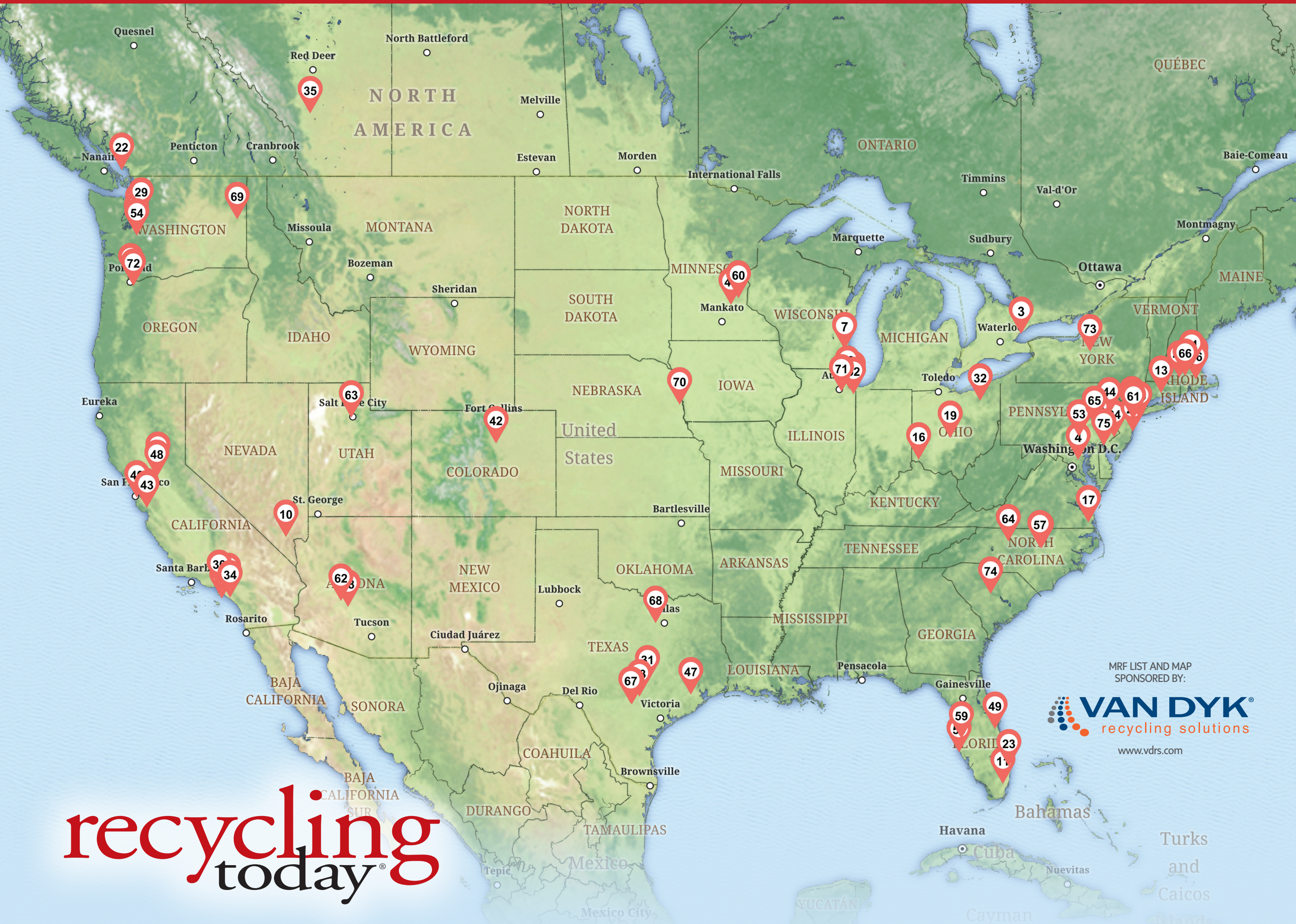
Based on rated capacity, three WM MRFs ranked in the top 10, led by Elkridge, Maryland, at 250,000 tons. **RT**

The author is associate editor of *Recycling Today* and can be reached at [cvoloschuk@gje.net](mailto:cvoloschuk@gje.net).





MAP & LIST OF NORTH AMERICA’S LARGEST MRFS



MRF LIST AND MAP  
SPONSORED BY:

**VAN DYK**  
recycling solutions

www.vdrs.com

NO.	PLANT OWNER/OPERATOR	MRF ADDRESS	2024 TONS RECEIVED
1	Western Placer Waste Management Authority	3013 Fiddymont Rd., Roseville, CA 95747	395,246
2	LRS	4121 S Packers Ave., Chicago, IL 60609	286,317
3	city of Toronto (GFL Inc.)	124 Arrow Rd., Toronto, ON M9M 1M6, Canada	250,000*
4	WM Recycle America LLC (WMRA)	7175 Kit Kat Rd., Elkridge, MD 21075-6419	250,000*
5	GreenWaste Recovery Inc.	625 Charles St., San Jose, CA 95112	245,035
6	Sunset Park Material Recovery Facility (Circular Services)	29th St. Pier, 472 2nd Ave., Brooklyn, NY 11201	236,005
7	WMRA	W132 N10487 Grant Dr., Germantown, WI 53022-4445	230,000*
8	WMRA	1800 Broadway St. NE, Minneapolis, MN 55413-2607	224,000*
9	Ricova New Jersey – Recycle City	41 S Broad St., Clifton, NJ 07013	210,000*
10	Southern Nevada Recycling Center (Republic Services)	360 W Cheyenne Ave., North Las Vegas, NV 89030	207,000*
11	WMRA	20701 Pembroke Rd., Pembroke Pines, FL 33029-2005	203,000*
12	WMRA	6120 River Rd., Hodgkins, IL 60525-4278	202,000*
13	All American MRF (Murphy Road Recycling)	655 Christian Ln., Berlin, CT 06037	200,000
14	Republic Services	2733 3rd Ave. S, Seattle, WA 98134	195,000*
15	Casella Waste Systems Inc.	14/24 Bunker Hill Industrial Pk., Charlestown, MA 02129	187,008
16	Rumpke Waste & Recycling	5535 Vine St., Cincinnati, OH 45217	184,351
17	TFC Recycling	1958 Diamond Hill Rd., Chesapeake, VA 23324	175,000*
18	WMRA	1440 Port of Tacoma Rd., Tacoma, WA 98421-3704	175,000*
19	Rumpke Waste & Recycling	1190 Joyce Ave., Columbus, OH 43219	174,907
20	WMRA	1501 W Gladstone Ave., Azusa, CA 91702-3219	174,000*
21	Atlantic Coast Recycling (Waste Connections)	101 7th St., Passaic, NJ 07055	173,460
22	Cascades Recovery+	8325 Main St., Vancouver, BC V5X 3M3, Canada	168,900*
23	Solid Waste Authority of Palm Beach County (Circular Services)	5860 45th St., West Palm Beach, FL 33412	168,800
24	WMRA	5201 Bleigh Ave., Philadelphia, PA 19136-4225	163,000*
25	Newby Island Resource Recovery Park (Republic Services)	1601 Dixon Landing, Milpitas, CA 95035	162,000*
26	Potential Industries Inc.	922 E E St., Wilmington, CA 90744	161,000*
27	Mazza Recycling Services	3230 Shafto Rd., Tinton Falls, NJ 07753	157,436
28	WMRA	150 Saint Charles St., Newark, NJ 07105-3946	156,000*
29	WMRA	14020 NE 190th St., Woodinville, WA 98072	152,000*
30	WMRA	9227 Tujunga Ave., Sun Valley, CA 91352	151,000*
31	Circular Services	9301 Johnny Morris Rd., Austin, TX 78724	149,520
32	WMRA	7450 Oak Leaf Rd., Oakwood, OH 44146	144,000*
33	WMRA	801 Kohlenberg Rd., New Braunfels, TX 78130	144,000*
34	WMRA	2050 N Glassell St., Orange, CA 92865-3306	143,000*

35	Cascades Recovery+	10351 46th St. SE, Calgary, AB T2C 2X9, Canada	142,600*
36	WMRA	40 Ledin Dr., Avon, MA 02322-1129	142,000*
37	WMRA	701 N Hunt St., Portland, OR 97217	140,000*
38	Friedman Recycling	3640 W Lincoln St., Phoenix, AZ 85009	136,700
39	Royal Recycling (Waste Connections)	172-06 Douglas Ave., Jamaica, NY 11433	132,756
40	city of San Francisco (Recology)	1000 Amador St., San Francisco, CA 94124	130,476*
41	Casella Waste Systems Inc.	15 Hardscrabble Rd., Auburn, MA 01501	129,338
42	WMRA	5395, Franklin St., Denver, CO 80216-6213	127,000*
43	California Waste Solutions	1005 Timothy Dr., San Jose, CA 95133	126,800*
44	WMRA	910 W Pennsylvania Ave, Pen Argyl, PA 18072	124,000*
45	Dem-Con Cos.	13020 Dem-Con Dr., Shakopee, MN 55379	123,980
46	Groot Industries (Waste Connections)	1759 Elmhurst Rd., Elk Grove Village, IL 60007	122,506
47	WMRA	9590 Clay Rd., Harris, TX 77080-1315	121,000*
48	WMRA	8491 Fruitridge Rd., Sacramento, CA 95826-4807	121,000*
49	WMRA	650 Townsend Rd., Cocoa, FL 32926	116,000*
50	Sonoco Recycling	111 S Rogers Lane, Raleigh, NC 27610	115,000
51	WMRA	72 Salem Rd., North Billerica, MA 01862-2707	113,000*
52	Diversified Recycling (Homewood Disposal)	17415 S Ashland, East Hazel Crest, IL 60429	111,600
53	Penn Waste Inc. (Waste Connections)	85 Brick Yard Rd., Manchester, PA 17345	109,000
54	Pioneer Tacoma MRF (Waste Connections)	4109 192nd St. E, Tacoma, WA 98446	107,040
55	Circular Services	3901 N Orange Ave., Sarasota, FL 34234	106, 638
56	TotalRecycle Inc. (J.P. Mascaro & Sons)	1270 Lincoln Rd., Birdsboro, PA 19508	105,000*
57	WMRA	1859 Capital Blvd., Raleigh, NC 27604	101,000*
58	WMRA	5610 FM 1346, Bexar, TX 78220-1906	101,000*
59	WMRA	3518 4th Ave. N, Tampa, FL 33605-5816	101,000*
60	Eureka Recycling	2828 Kennedy St. NE, Minneapolis, MN 55413	98,940
61	Claremont Terminal MRF (Circular Services)	1 Linden Ave. E, Jersey City, NJ 07305	96,000*
62	WMRA	19401 W Deer Valley Rd., Maricopa, AZ 85387-9414	96,000*
63	WMRA	3405 W 900 S, Salt Lake City, UT 84104	96,000*
64	WMRA	280 Business Park Dr., Winston-Salem, NC 27107	95,000*
65	Cougle's Recycling Inc.	1000 S 4th St., Hamburg, PA 19526	94,806
66	E.L. Harvey (Waste Connections)	68 Hopkinton Rd., Westborough, MA 01545	92,667
67	Republic Services	1949 Hormel Dr., San Antonio, TX 78219	92,000*
68	Republic Services	6100 Elliott Reeder Rd., Fort Worth, TX 76117	90,000*
69	WMRA	2902 S Geiger Blvd., Spokane, WA 99224-5400	89,000*
70	Firststar Recycling	10330 I St., Suite 100, Omaha, NE 68127	88,000
71	Groot Industries (Waste Connections)	10244 Clow Creek Rd., Plainfield, IL 60585	87,816
72	Pioneer Recycling Services (Waste Connections)	16810 SE 120th Ave., Clackamas, OR 97015	86,700
73	WMRA	4550 Steelway Blvd. S, Liverpool, NY 13090	86,000*
74	Sonoco Recycling	1132 Idlewild Blvd., Columbia, SC 29201	85,000
75	Republic Services	1101 Lambsons Ln., New Castle, DE 19720	84,700*

\*Estimate, \*\*Rated capacity

AVAILABLE ONLINE: An electronic version of this list and map is available at [www.RecyclingToday.com/page/mapslists](http://www.RecyclingToday.com/page/mapslists).